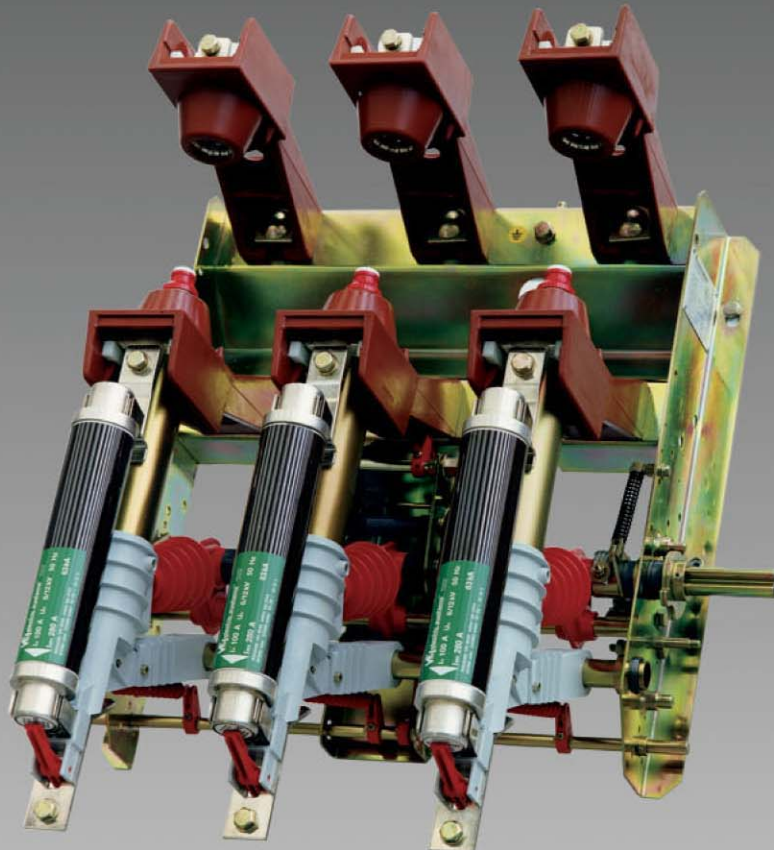




# ISARC-P

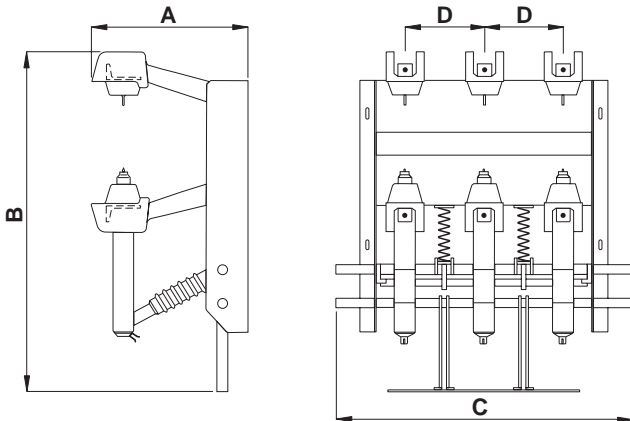
AIR INSULATED LOAD BREAK SWITCH DISCONNECTORS

12/36 kV - 400/630 A - 12,5/25 kA



Exit

## AIR INSULATED LOAD BREAK SWITCH DISCONNECTORS



### OVERALL DIMENSIONS AND WEIGHT

Type	kV	A (mm)	B (mm)	C (mm)	D (mm)	Weight (kg.)
1P - 3P <sup>(*)</sup>	12	375	880	820	210	60
	24	430	880	1030	300	75
2P - 4P <sup>(*)</sup>	12	395	940	860	210	65
	24	480	940	1060	300	80

(\*) - For execution 36 kV ask VEI

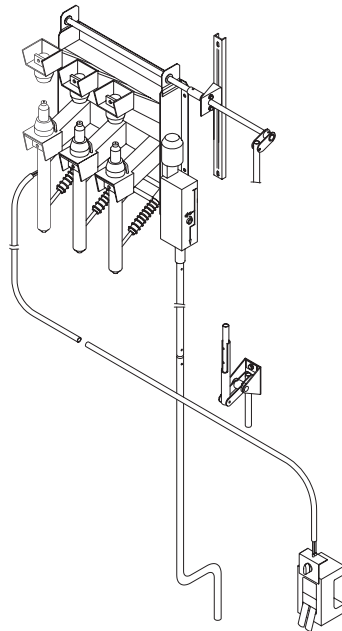
Type 1 - Switch disconnecter

Type 2 - Transformer protection fuse-switch disconnecter

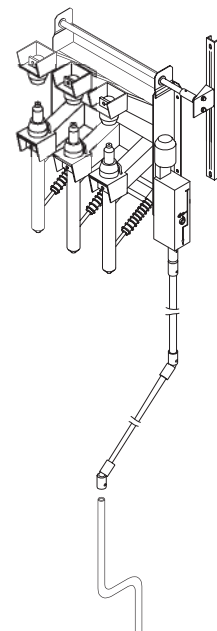
Type 3 - Disconnecter (off-load)

Type 4 - Disconnecter with fuse-holders (off-load)

**Load break switch "ISARC P" with remote control**



**Load break switch "ISARC P" controlled by handle**



### ELECTRICAL FEATURES

Rated voltage	Ur [kV]	12	17,5	24	36
Power frequency withstand voltage (50/60 Hz 1 min) to earth and between phases	[kV]	28	38	50	70
Impulse withstand voltage to earth and between phases	Up [kV]	75	95	125	170
Rated current	In [A]	400-630	400-630	400-630	400-630
Breaking capacity of active circuits (cos $\varnothing$ 0.7) and ring circuits at 0.3 Vn	Isc [kA]	400-630	400-630	400-630	400
Breaking capacity of no-load transformers	Isc [kA]	25	25	25	16
Breaking capacity of no-load lines / cables	Isc [kA]	25	25	25	25
Short time current - 1 sec	Ik [kA]	12,5...25	12,5...25	12,5...25	12,5
Short time current - 3 sec	Ik [kA]	12,5...20	12,5...20	12,5...20	-
Making capacity	[kA]	31,5...62,5	31,5...62,5	31,5...62,5	31,5

VEI S.p.A. reserves the right of bringing any modification due to technical and commercial reasons at any time. Therefore the information and pictures reported in the present issue are updated until the approval of printing.