



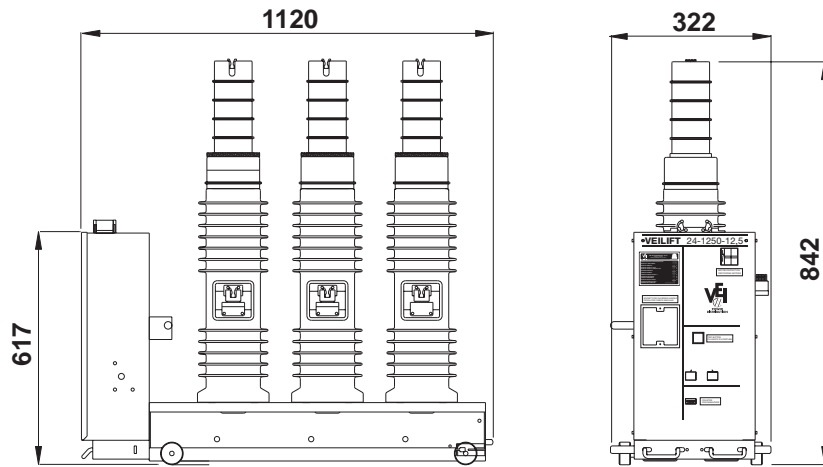
# VEILIFT

VACUUM CIRCUIT BREAKERS V-V SERIES

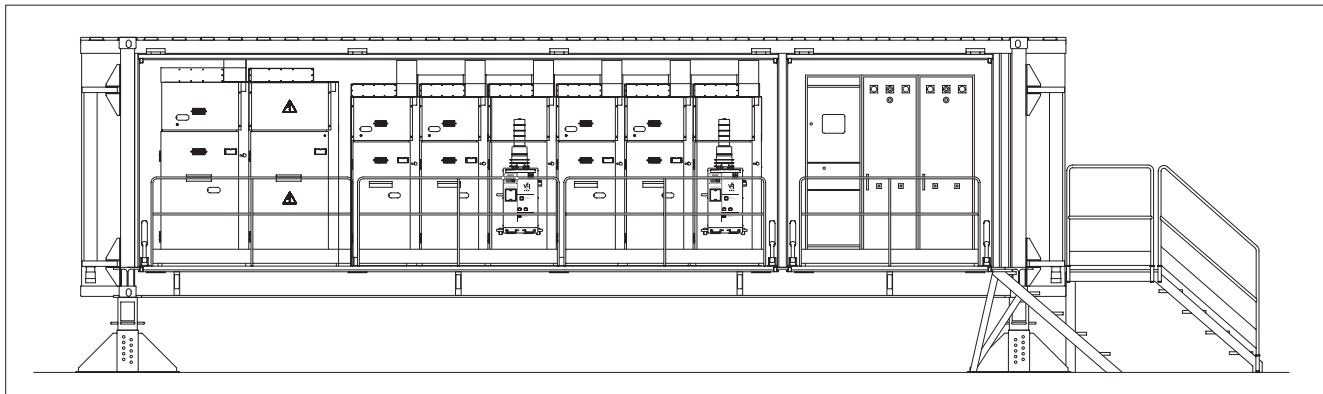
17,5/24 kV - 630/1250 A - 12,5 kA



Exit



EXAMPLE OF "VEILIFT" APPLICATION IN MOBILE SUBSTATION



### ELECTRICAL FEATURES

Type		VV 17,5	VV 24
Rated voltage	Ur [kV]	17,5	24
Power frequency withstand voltage (50/60 Hz 1 min) to earth and between phases	[kV]	38	50
Impulse withstand voltage	Up [kV]	95	125
Rated frequency	fr [Hz]	50±60	50±60
Rated normal current	In [A]	630-1250	630-1250
Rated breaking capacity	Isc [kA]	12,5-16-20	12,5-16
Short time current 1-3 sec.	Ik [kA]	12,5-16-20	12,5-16
Making capacity	[kA]	31,5-40-50	31,5-40
Operation sequence	-	0-0,3 sec. C-O	-15 sec. C-O
Opening time	[ms]	25±35	25±35
Arcing time	[ms]	6±10	6±10
Closing time	[ms]	35±45	35±45
Weight	[kg]	95	95

VEI S.p.A. reserves the right of bringing any modification due to technical and commercial reasons at any time. Therefore the information and pictures reported in the present issue are updated until the approval of printing.