

# Medium, high and extra high Voltage Switchgear Equipments



 **elimsan**

[www.elimsangroup.com](http://www.elimsangroup.com)

metal enclosed switchgears



airinsulatedwithSF6gas  
loadbreakswitches  
type :TG21-xx  
standard : IEC 60298  
rated voltage :12-36kV  
rated current : 400-630 A  
short time current: 16-25 kA



vacuum contactor  
panels for motor control

cassette  
for mv panels

cradle  
for mv panels



rated voltage : 7.2 kV  
rated current : 400-800 A  
standard : IEC 60470



rated voltage: 7.2-36 kV  
rated current : 630-1250 A  
standard : IEC 60298-IEC 60694



rated voltage: 7.2-36 kV  
rated current : 630-1250 A  
standard : IEC 60056-IEC 60694

**vacuum circuit breakers  
(spring type mechanism)**

**SF6 gas  
circuitbreakers**

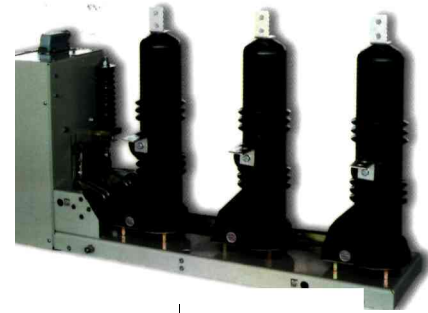
**side wall operated  
SF6 gas circuit breakers**



rated voltage : 12kV to 36kV  
 rated current : 630 A to 3150 A  
 standard : IEC 60056



rated voltage : 3.6 kV to 36 kV  
 rated current : 630 A to 2500 A  
 standard : IEC 60056



rated voltage : 7.2kV to 36kV  
 rated current : 630 A to 1250 A  
 standard : IEC 60056

**high voltage vertical  
type disconnectors**

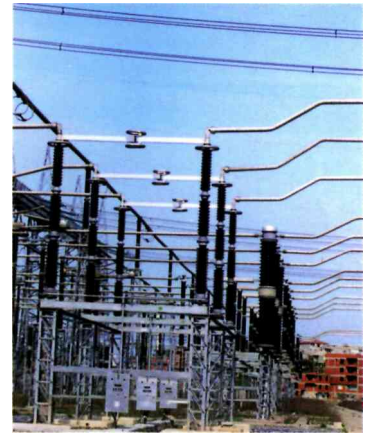
**high voltage pantograph high voltage centre-break  
type disconnectors 1 type disconnectors**



rated voltage : 170kV to 525kV  
 rated current : 1250 A to 4000 A  
 standard : IEC 60129-60694



rated voltage : 170kV to 525kV  
 rated current : 1250 A to 4000 A  
 standard : IEC 60129-60694

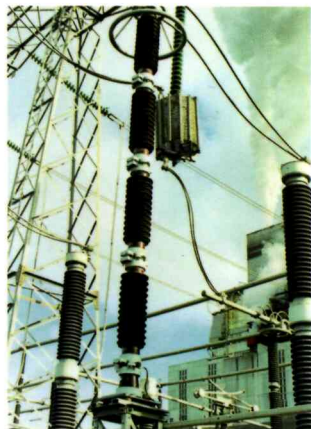


rated voltage : 72.5 kV to 525 kV  
 rated current : 1250 A to 4000 A  
 standard : IEC 60129-60694

**high voltage metaloxide  
surge arresters**

**polymeric housed medium  
and high voltage  
metaloxide surge arresters**

**porcelain housed medium  
voltage metaloxide  
surge arresters**



rated voltage : 54 kV to 500 kV  
 discharge current: 10 kA

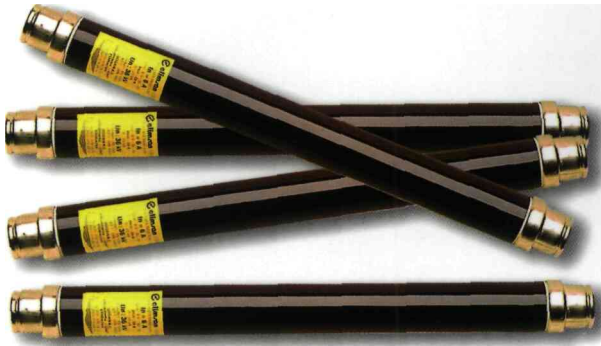


rated voltage : 4 kV to 144 kV  
 discharge current: 5-10 kA



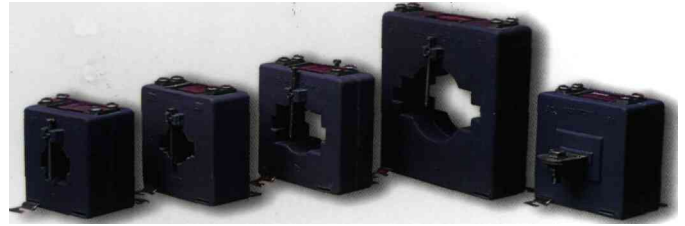
rated voltage : 4 kV to 37 kV  
 rated discharge current: 5-10 kA

medium voltage fuses



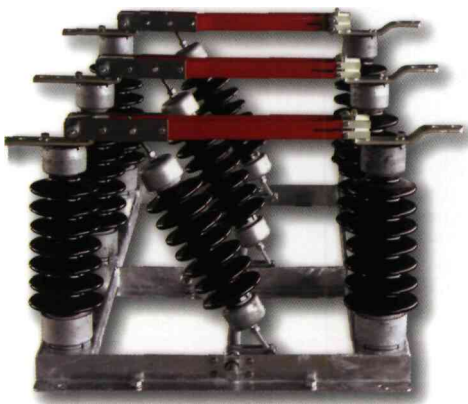
rated voltage 3.6 kV to 36 kV  
 rated current 2 A to 125 A  
 S.C breaking current 8 kA to 40 kA

L.V current transformers



rated voltage : 800 V  
 rated current : 10 A to 3000 A/5A

medium voltage disconnectors



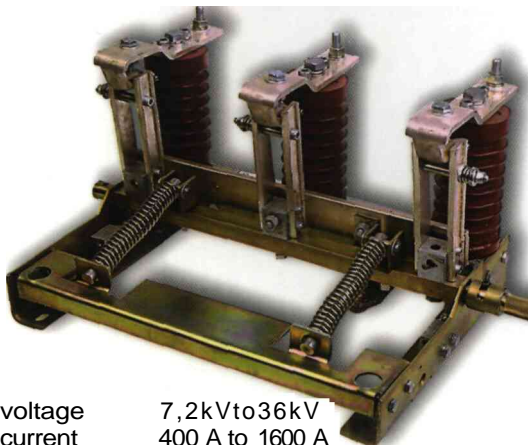
nominal voltage : 7.2 kV to 36 kV  
 nominal current MOO A to 1600 A  
 shorttime current (3s) : 12.5kAto40kA

SL-125 W-HQL high pressure mercury vapor lamp



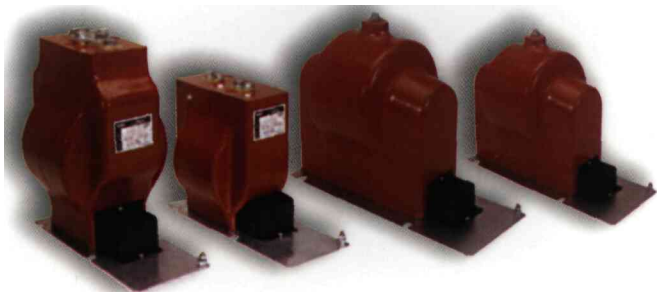
rated voltage : 220 V  
 rated power : 25 W to 400 W

medium voltage earthing switches



rated voltage 7,2kVto36kV  
 rated current 400 A to 1600 A  
 short time current 12.5kAto40kA  
 (with making capacity)

M.V. measurement transformers



rated voltage : 12 - 24 - 36 kV



## ELİMSAN Şalt Cihazları ve Elektromekanik San. ve Tic. A.Ş.

pb: 295 • Uzuntarla • İZMİT • Phone: +90 262 375 28 10 • Fax: +90 262 375 28 08  
e-mail: [elimsanuretim@elimsangroup.com](mailto:elimsanuretim@elimsangroup.com)

## ELİ İthalat - İhracat ve Dış Tic. A.Ş.

pb: 295 • Uzuntarla • İZMİT • Phone: +90 262 375 23 60 (pbx) • Fax: +90 262 375 23 22  
e-mail: [eli@elimsangroup.com](mailto:eli@elimsangroup.com)

[www.elimsangroup.com](http://www.elimsangroup.com)